

Barbed fittings









FESTO



Barbed fittings

Product range overview




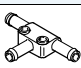
FESTO

| Design | Version | Type | Pneumatic connection 1 | | Pneumatic connection 2 | | | | → Page/ Internet |
|----------------|---|------|------------------------|----------|------------------------|-------------------------|---------------------|-------------------------|---------------------|
| | | | M thread | G thread | Barbed connector | For tubing O.D. [mm] | Barbed connector | For tubing O.D. [mm] | |
| Straight shape | Barbed fitting with male thread and external hex | | | | | | | | |
| |  | N | M5 | – | – | – | PK-3 | – | 5 |
| | | | | | | | PK-4 | | |
| | Barbed fitting with male thread and external hex | | | | | | | | |
| |  | CN | M3 | – | – | – | – | 3, 4 | 6 |
| | | | M5 | – | | | | 3, 4, 6 | |
| | | | – | G1/8 | | | | 4, 6, 8 | |
| | | | – | G1/4 | | | | 6, 8 | |
| | | | – | G3/8 | | | | 8 | |
| | Barbed fitting with male thread and external hex – stainless steel design | | | | | | | | |
| |  | CRCN | M5 | – | – | – | – | 3, 4, 6 | 7 |
| | | | – | G1/8 | | | | 4, 6, 8 | |
| | | | – | G1/4 | | | | 6, 8 | |
| | | | – | G3/8 | | | | 8 | |
| | Barbed bulkhead fitting | | | | | | | | |
| |  | SCN | – | – | – | 3 | – | – | 8 |
| | | | | | | 4 | | | |
| | | | | | | 6 | | | |
| | | | | | | 8 | | | |
| | Barbed tubing connector | | | | | | | | |
| |  | RTU | – | – | PK-2 | – | PK-2 | – | 9 |
| | | | | | PK-3 | | PK-2, PK-3, PK-4 | | |
| | | | | | PK-4 | | PK-4, PK-6 | | |
| | | | | | PK-6 | | PK-6 | | |
| L-shape | Barbed L-fitting with male thread – rotatable 360° | | | | | | | | |
| |  | LCN | M3 | – | – | – | – | 3, 4 | 10 |
| | | | M5 | – | | | | 3, 4, 6 | |
| | | | – | G1/8 | | | | 4, 6, 8 | |
| | | | – | G1/4 | | | | 6, 8 | |
| | | | – | G3/8 | | | | 8 | |
| | Barbed L-fitting with male thread – extended housing section – rotatable 360° | | | | | | | | |
| |  | LCNH | M5 | – | – | – | – | 3, 4, 6 | 12 |
| | | | – | G1/8 | | | | 4, 6, 8 | |
| | | | – | G1/4 | | | | 6, 8 | |
| | | | – | G3/8 | | | | 8 | |
| | Barbed L-connector | | | | | | | | |
| |  | L-PK | – | – | PK-2 | – | – | – | 14 |
| | | | | | PK-3 | | | | |
| | | | | | PK-4 | | | | |
| | | | | | PK-6 | | | | |

Barbed fittings

Product range overview

FESTO

| Design | Version | Type | Pneumatic connection 1 | | | Pneumatic connection 2 | | | → Page/ Internet |
|---------|---|------|------------------------|----------|------------------|------------------------|------------------|----------------------|---------------------|
| | | | M thread | G thread | Barbed connector | For tubing O.D. [mm] | Barbed connector | For tubing O.D. [mm] | |
| T-shape | Barbed T-fitting with male thread – rotatable 360° | | | | | | | | |
| |  | TCN | M3 | – | – | – | – | 3, 4 | 15 |
| | | | M5 | – | | | | 3, 4, 6 | |
| | | | – | G1/8 | | | | 4, 6, 8 | |
| | | | – | G1/4 | | | | 6, 8 | |
| | | | – | G3/8 | | | | 8 | |
| | Barbed T-connector | | | | | | | | |
| |  | T-PK | – | – | PK-2 | – | – | – | 16 |
| | | | | | PK-3 | | | | |
| | | | | | PK-4 | | | | |
| | | | | | PK-6 | | | | |
| Y-shape | Barbed Y-connector | | | | | | | | |
| |  | Y-PK | – | – | PK-2 | – | – | – | 17 |
| | | | | | PK-3 | | | | |
| | | | | | PK-4 | | | | |
| | | | | | PK-6 | | | | |
| | Barbed T-connector | | | | | | | | |
| |  | FCN | – | – | – | 3 | – | 3, 4 | 18 |
| | | | | | | 4 | | 4, 6 | |
| | | | | | | 6 | | 6, 8 | |
| | | | | | | 8 | | 8 | |

Tube assembly/dismantling

Assembly:

1. Hold the tubing as close to the end as possible.
2. Rotate the tubing (approx. 90°) around the barbed axis while attaching it.

Dismantling:

1. Use a knife to cut off the tubing behind the sealing and support edge.
Be careful not to damage the barbed connector on the sealing and support edge.
2. Remove the tubing.

Available supporting accessories

Connecting pliers ZMS-PK-3/4

→ Internet: zms




Disconnecting pliers ZDS-PK-3,
ZDS-PK-4

→ Internet: zds

Barbed hose fittings C-P/N-P, for hose clip

Product range overview

FESTO

| Design | Version | Type | Pneumatic connection D1 | | | Pneumatic connection D2 | → Page/ Internet |
|--|---------------------|------|-------------------------|-------------|-------------------|-------------------------|---------------------|
| | | | G thread | R thread | NPT thread | Barbed connector | |
| Barbed hose fitting | | | | | | | |
|  | C-...-P | G1/8 | – | – | PK-6 | 19 | |
| | | G1/4 | – | – | PK-6, PK-9 | | |
| | | G3/8 | – | – | PK-6, PK-9 | | |
| | | G1/2 | – | – | PK-13 | | |
| Barbed hose fitting with sealing ring (aluminium and brass design) | | | | | | | |
|  | N-...-P N-...-MS | G1/8 | – | – | PK-6 | 20 | |
| | | G1/4 | – | – | PK-6, PK-9 | | |
| | | G3/8 | – | – | PK-6, PK-9, PK-13 | | |
| | | G1/2 | – | – | PK-9, PK-13 | | |
| | | G3/4 | – | – | PK-13, PK-19 | | |
| | | – | R1 | – | PK-19 | | |
| | | – | – | NPT3/4-14 | PK-19 | | |
| | | – | – | NPT1-11 1/2 | PK-19 | | |
| Hose clip to DIN 3017 | | | | | | | |
|  | SK | | | | | 22 | |

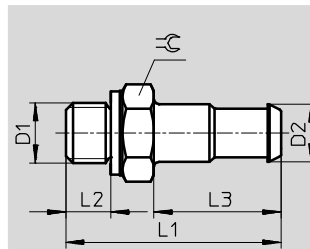
Barbed fittings N/CN

Technical data

FESTO

Barbed fittings N

with external thread and external hexagon



General technical data

| | |
|-------------------------------|--------------|
| Type of seal on threaded plug | Sealing ring |
|-------------------------------|--------------|

Operating and environmental conditions

| | |
|--------------------------------|--|
| Operating medium | Compressed air to ISO 8573-1:2010 [7:-:-] |
| Note on operating/pilot medium | Lubricated operation possible (in which case lubricated operation will always be required) |

Materials

| | |
|---------|-------|
| Housing | Brass |
|---------|-------|

Dimensions and ordering data

| Pneumatic connection | | Nominal width | D2 | L1 | L2 | L3 | ≡ | Weight/ piece | Part No. | Type | PU ¹⁾ |
|---------------------------------|------|---------------|-----|----|-----|------|---|------------------|----------|-----------|------------------|
| D1 | | [mm] | | | | | | [g] | | | |
| Metric thread with sealing ring | | | | | | | | | | | |
| M5 | PK-3 | 2.5 | 3.6 | 16 | 3.5 | 8.5 | 7 | 1 | 4446 | N-M5-PK-3 | 10 |
| | PK-4 | 2.5 | 4.8 | 18 | 3.5 | 10.5 | 7 | 2 | 4902 | N-M5-PK-4 | 10 |

1) Packaging unit

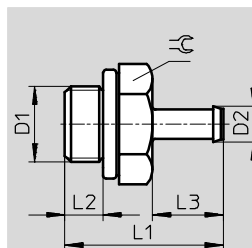
Barbed fittings N/CN

Technical data

FESTO

Barbed fitting CN

with external thread and external hexagon



| General technical data | |
|--|--|
| Type of seal on threaded plug | Sealing ring |
| Operating and environmental conditions | |
| Operating pressure [bar] | -0.95 ... +10 |
| Operating medium | Compressed air to ISO 8573-1:2010 [7:-:-] |
| Note on operating/pilot medium | Lubricated operation possible (in which case lubricated operation will always be required) |
| Ambient temperature [°C] | 0 ... +60 |
| Corrosion resistance class CRC ¹⁾ | 2 |

1) Corrosion resistance class CRC 2 to Festo standard FN 940070

Moderate corrosion stress. Indoor applications in which condensation may occur. External visible parts with primarily decorative requirements for the surface and which are in direct contact with the ambient atmosphere typical for industrial applications.

| Materials | | | |
|------------------------|------------------|----------------|----------------------------|
| Pneumatic connection 1 | Male thread M3 | Male thread M5 | Male thread G1/8/G1/4/G3/8 |
| Housing | High-alloy steel | Steel | Aluminium |
| Note on materials | RoHS-compliant | | |

| Dimensions and ordering data | | | | | | | | | | |
|------------------------------|----------------------|--------------------|------|------|-----|------|-----|----------|-------------|------------------|
| Pneumatic connection | | Nominal width [mm] | D2 | L1 | L2 | L3 | ≡ | Part No. | Type | PU ¹⁾ |
| External thread | For tubing O.D. [mm] | | | | | | | | | |
| D1 | | | | | | | | | | |
| M thread with sealing ring | | | | | | | | | | |
| M3 | 3 | 1.5 | 2.6 | 10 | 3 | 5 | 4.5 | 15871 | CN-M3-PK-2 | 10 |
| | 4 | 1.5 | 3.4 | 11 | 3 | 6 | 4.5 | 15872 | CN-M3-PK-3 | 10 |
| M5 | 3 | 1.5 | 2.95 | 13.8 | 3.8 | 6 | 7 | 19521 | CN-M5-PK-2 | 10 |
| | 4 | 2.5 | 3.6 | 17.5 | 3.8 | 9.7 | 7 | 12255 | CN-M5-PK-3 | 10 |
| | 6 | 2.5 | 4.8 | 19.5 | 3.8 | 11.7 | 7 | 12256 | CN-M5-PK-4 | 10 |
| G thread with sealing ring | | | | | | | | | | |
| G1/8 | 4 | 2.5 | 3.6 | 20.2 | 4.9 | 9.7 | 13 | 11944 | CN-1/8-PK-3 | 10 |
| | 6 | 3.2 | 4.8 | 22.2 | 4.9 | 11.7 | 13 | 11945 | CN-1/8-PK-4 | 10 |
| | 8 | 5.3 | 7 | 24.5 | 4.9 | 14 | 13 | 11946 | CN-1/8-PK-6 | 10 |
| G1/4 | 6 | 3.2 | 4.8 | 24.7 | 5.8 | 11.7 | 17 | 11947 | CN-1/4-PK-4 | 10 |
| | 8 | 5.3 | 7 | 27 | 5.8 | 14 | 17 | 11948 | CN-1/4-PK-6 | 10 |
| G3/8 | 8 | 5.3 | 7 | 28 | 6.8 | 14 | 19 | 11949 | CN-3/8-PK-6 | 10 |

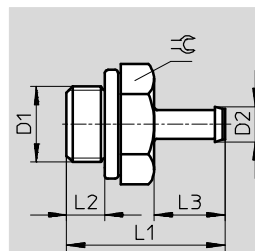
1) Packaging unit

Barbed fittings N/CN

Technical data

Barbed fitting CRCN

Stainless steel design
with external thread and external
hexagon



General technical data

| | |
|-------------------------------|--------------|
| Type of seal on threaded plug | Sealing ring |
|-------------------------------|--------------|

Operating and environmental conditions

| | |
|--|--|
| Operating pressure [bar] | −0.95 ... +10 |
| complete temperature range | |
| Operating medium | Compressed air in accordance with ISO 8573-1:2010 [7:-:-] |
| Note on operating/pilot medium | Lubricated operation possible (in which case lubricated operation will always be required) |
| Ambient temperature [°C] | 0 ... +60 |
| Corrosion resistance class CRC ¹⁾ | 2 |
| Food-safe ²⁾ | See supplementary material information |

1) Corrosion resistance class CRC 2 to Festo standard FN 940070

Moderate corrosion stress. Indoor applications in which condensation may occur. External visible parts with primarily decorative requirements for the surface and which are in direct contact with the ambient atmosphere typical for industrial applications.


2) Additional information www.festo.com/sp → Certificates.

Materials

| | |
|-------------------|----------------------------|
| Housing | High-alloy stainless steel |
| Threaded seal | Stainless steel, FPM |
| Note on materials | RoHS-compliant |

Dimensions and ordering data

Dimensions and ordering data

| Pneumatic connection | | Nominal width [mm] | D2 | L1 | L2 | L3 |  | Weight/ piece [g] | Part No. | Type | PU ¹⁾ |
|----------------------------|-------------------------|--------------------------|------|------|-----|------|---|-------------------------|----------|---------------|------------------|
| External thread D1 | For tubing O.D. [mm] | | | | | | | | | | |
| M thread with sealing ring | | | | | | | | | | | |
| M5 | 3 | 1.5 | 2.95 | 13.8 | 3.8 | 6 | 7 | 1.8 | 30985 | CRCN-M5-PK-2 | 10 |
| | 4 | 2.5 | 3.6 | 17.5 | 3.8 | 9.7 | 7 | 1.74 | 13967 | CRCN-M5-PK-3 | 10 |
| | 6 | 2.5 | 4.8 | 19.5 | 3.8 | 11.7 | 7 | 2.58 | 13968 | CRCN-M5-PK-4 | 10 |
| G thread with sealing ring | | | | | | | | | | | |
| G1/8 | 4 | 2.5 | 3.6 | 20.2 | 4.9 | 9.7 | 13 | 7.52 | 13969 | CRCN-1/8-PK-3 | 10 |
| | 6 | 3.2 | 4.8 | 22.2 | 4.9 | 11.7 | 13 | 7.86 | 13970 | CRCN-1/8-PK-4 | 10 |
| | 8 | 5.3 | 7 | 24.5 | 4.9 | 14 | 13 | 7.5 | 13971 | CRCN-1/8-PK-6 | 10 |
| G1/4 | 6 | 3.2 | 4.8 | 24.7 | 5.8 | 11.7 | 17 | 17.73 | 13972 | CRCN-1/4-PK-4 | 1 |
| | 8 | 5.3 | 7 | 27 | 5.8 | 14 | 17 | 16.5 | 13973 | CRCN-1/4-PK-6 | 1 |
| G3/8 | 8 | 5.3 | 7 | 28 | 6.8 | 14 | 19 | 23.7 | 13974 | CRCN-3/8-PK-6 | 1 |

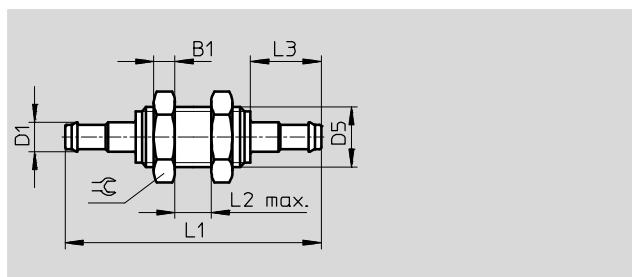
1) Packaging unit

Barbed fittings N/CN

Technical data

FESTO

Barbed bulkhead fitting SCN



| Operating and environmental conditions | |
|--|--|
| Operating pressure [bar] | -0.95 ... +10 |
| Operating medium | Compressed air to ISO 8573-1:2010 [7:-:-] |
| Note on operating/pilot medium | Lubricated operation possible (in which case lubricated operation will always be required) |
| Ambient temperature [°C] | 0 ... +60 |
| Corrosion resistance class CRC ¹⁾ | 2 |

- 1) Corrosion resistance class CRC 2 to Festo standard FN 940070
Moderate corrosion stress. Indoor applications in which condensation may occur. External visible parts with primarily decorative requirements for the surface and which are in direct contact with the ambient atmosphere typical for industrial applications.

| Materials | |
|-------------------|----------------|
| Housing | Aluminium |
| Note on materials | RoHS-compliant |

| Dimensions and ordering data | | | | | | | | | | | | |
|---|--------------------|-----|------|---------|------|----|------|----|-------------------|--------------|-----------------|------------------|
| Pneumatic connection for tubing O.D. [mm] | Nominal width [mm] | B1 | D1 | D5 | L1 | L2 | L3 | ≅ | Weight/ piece [g] | Part No. | Type | PU ¹⁾ |
| 3 | 1.5 | 2.2 | 2.95 | M4 | 23.4 | 6 | 6 | 7 | 1 | 19528 | SCN-PK-2 | 10 |
| 4 | 1.9 | 3.2 | 3.6 | M6x0.75 | 35.3 | 8 | 9.7 | 10 | 4 | 11972 | SCN-PK-3 | 10 |
| 6 | 2.8 | 3.5 | 4.8 | M10x1 | 42.4 | 10 | 11.7 | 13 | 7 | 11973 | SCN-PK-4 | 10 |
| 8 | 4.8 | 4 | 7 | M12x1 | 48 | 10 | 14 | 17 | 10 | 11974 | SCN-PK-6 | 10 |

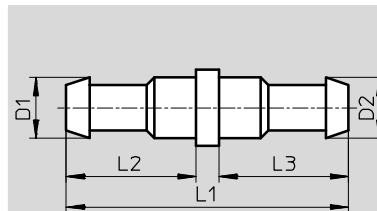
- 1) Packaging unit

Barbed fittings N/CN

Technical data

FESTO

Barbed tubing connector RTU



Operating and environmental conditions

| | |
|--------------------------------|--|
| Operating medium | Compressed air to ISO 8573-1:2010 [7:-:-] |
| Note on operating/pilot medium | Lubricated operation possible (in which case lubricated operation will always be required) |

Materials

| | |
|-------------------|----------------|
| Housing | Brass |
| Note on materials | RoHS-compliant |

Dimensions and ordering data

| Pneumatic connection | | Nominal width [mm] | D1 | D2 | L1 | L2 | L3 | Weight/ piece [g] | Part No. | Type | PU ¹⁾ |
|----------------------|------|--------------------|------|------|------|------|------|-------------------|--------------|---------------------|------------------|
| PK-2 | PK-2 | 1.5 | 2.95 | 2.95 | 14 | 6 | 6 | 1 | 19541 | RTU-PK-2/2-B | 10 |
| PK-3 | PK-2 | 1.5 | 3.6 | 2.95 | 17.7 | 9.7 | 6 | 1 | 19542 | RTU-PK-3/2 | 10 |
| | PK-3 | 2.5 | 3.6 | 3.6 | 19 | 8.5 | 8.5 | 1 | 4805 | RTU-PK-3/3 | 10 |
| | PK-4 | 2.5 | 3.6 | 4.8 | 20 | 8.5 | 10.5 | 2 | 4499 | RTU-PK-3/4 | 10 |
| PK-4 | PK-4 | 3.4 | 4.8 | 4.8 | 23 | 10.5 | 10.5 | 2 | 4806 | RTU-PK-4/4 | 10 |
| | PK-6 | 3.4 | 4.8 | 7 | 25.5 | 10.5 | 13 | 2 | 7604 | RTU-PK-4/6 | 10 |
| PK-6 | PK-6 | 5.3 | 7 | 7 | 28 | 13 | 13 | 3 | 7605 | RTU-PK-6/6 | 10 |

1) Packaging unit

Barbed fittings N/CN

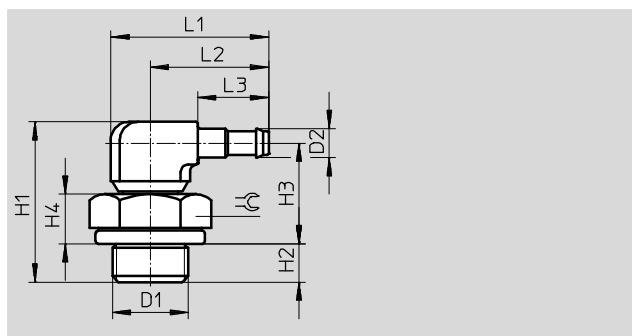
Technical data

FESTO

Barbed L-fitting LCN

With external thread

Rotatable 360°

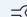


| General technical data | |
|--|--|
| Type of seal on threaded plug | Sealing ring |
| Operating and environmental conditions | |
| Operating pressure [bar] | -0.95 ... +10 |
| Operating medium | Compressed air to ISO 8573-1:2010 [7:-:-] |
| Note on operating/pilot medium | Lubricated operation possible (in which case lubricated operation will always be required) |
| Ambient temperature [°C] | 0 ... +60 |
| Corrosion resistance class CRC ¹⁾ | 2 |

1) Corrosion resistance class CRC 2 to Festo standard FN 940070

Moderate corrosion stress. Indoor applications in which condensation may occur. External visible parts with primarily decorative requirements for the surface and which are in direct contact with the ambient atmosphere typical for industrial applications.

| Materials | | | |
|------------------------|------------------|----------------|----------------------------|
| Pneumatic connection 1 | Male thread M3 | Male thread M5 | Male thread G1/8/G1/4/G3/8 |
| Housing | High-alloy steel | Steel | Aluminium |
| | Die-cast zinc | | |
| Note on materials | RoHS-compliant | | |

| Dimensions | | | | | | | | | | |
|----------------------------|-------------------------|------|-------|-----|-------|-----|------|------|------|---|
| Pneumatic connection | | D2 | H1 | H2 | H3 | H4 | L1 | L2 | L3 |  |
| External thread D1 | For tubing O.D. [mm] | | | | | | | | | |
| M thread with sealing ring | | | | | | | | | | |
| M3 | 3 | 2.95 | 14 | 2.8 | 9.2 | 3.0 | 12.2 | 9.6 | 6 | 4.5 |
| | 4 | 3.6 | 15.2 | 2.8 | 9.8 | 3.0 | 15.9 | 13.3 | 9.7 | 4.5 |
| M5 | 3 | 2.95 | 16 | 3.8 | 10.2 | 4.0 | 12.2 | 9.6 | 6 | 7 |
| | 4 | 3.6 | 20.1 | 3.8 | 13.7 | 4.0 | 18.7 | 14.7 | 9.7 | 7 |
| | 6 | 4.8 | 21.4 | 3.8 | 13.9 | 4.0 | 20.7 | 16.7 | 11.7 | 7 |
| | | | | | | | | | | |
| G thread with sealing ring | | | | | | | | | | |
| G1/8 | 4 | 3.6 | 21.2 | 4.9 | 13.7 | 5.6 | 24 | 17.5 | 9.7 | 13 |
| | 6 | 4.8 | 22.55 | 4.9 | 14.15 | 5.6 | 26 | 19.5 | 11.7 | 13 |
| | 8 | 7 | 24.45 | 4.9 | 15.15 | 5.6 | 28.5 | 22 | 14.2 | 13 |
| G1/4 | 6 | 4.8 | 25.05 | 5.8 | 15.75 | 7.2 | 26 | 19.5 | 11.7 | 17 |
| | 8 | 7 | 26.95 | 5.8 | 16.75 | 7.2 | 28.5 | 22 | 14.2 | 17 |
| G3/8 | 8 | 7 | 27.95 | 6.8 | 16.75 | 7.2 | 28.5 | 22 | 14.2 | 19 |

Barbed fittings N/CN

FESTO

Technical data

| Ordering data | | | | | | |
|----------------------------|-------------------------|-----------------------|-------------------------|----------|--------------------------|------------------|
| Pneumatic connection | | Nominal width [mm] | Weight/ piece [g] | Part No. | Type | PU ¹⁾ |
| External thread D1 | For tubing O.D. [mm] | | | | | |
| M thread with sealing ring | | | | | | |
| M3 | 3 | 1.3 | 2 | 30491 | LCN-M3-PK-2-B | 10 |
| | 4 | 2.0 | 2 | 30982 | LCN-M3-PK-3 | 10 |
| M5 | 3 | 1.3 | 4 | 19523 | LCN-M5-PK-2 | 10 |
| | 4 | 2.0 | 5 | 12257 | LCN-M5-PK-3 | 10 |
| | 6 | 2.9 | 6 | 12258 | LCN-M5-PK-4 | 10 |
| | | | | | | |
| G thread with sealing ring | | | | | | |
| G $\frac{1}{8}$ | 4 | 2.0 | 9 | 11955 | LCN- $\frac{1}{8}$ -PK-3 | 10 |
| | 6 | 2.9 | 10 | 11956 | LCN- $\frac{1}{8}$ -PK-4 | 10 |
| | 8 | 4.9 | 11 | 11957 | LCN- $\frac{1}{8}$ -PK-6 | 10 |
| G $\frac{1}{4}$ | 6 | 2.9 | 13 | 12958 | LCN- $\frac{1}{4}$ -PK-4 | 10 |
| | 8 | 4.9 | 15 | 12959 | LCN- $\frac{1}{4}$ -PK-6 | 10 |
| G $\frac{3}{8}$ | 8 | 4.9 | 20 | 12960 | LCN- $\frac{3}{8}$ -PK-6 | 10 |

1) Packaging unit

Barbed fittings N/CN

Technical data

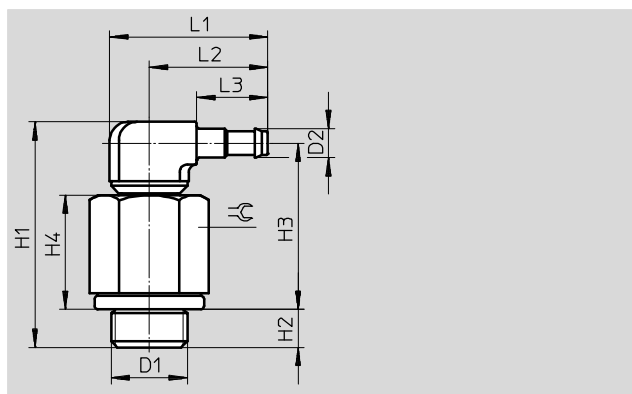
FESTO

Barbed L-fitting

LCNH

with external thread

Rotatable 360°




| General technical data | |
|--|--|
| Type of seal on threaded plug | Sealing ring |
| Operating and environmental conditions | |
| Operating pressure [bar] | -0.95 ... +10 |
| Operating medium | Compressed air to ISO 8573-1:2010 [7:-:-] |
| Note on operating/pilot medium | Lubricated operation possible (in which case lubricated operation will always be required) |
| Ambient temperature [°C] | 0 ... +60 |
| Corrosion resistance class CRC ¹⁾ | 2 |

1) Corrosion resistance class CRC 2 to Festo standard FN 940070

Moderate corrosion stress. Indoor applications in which condensation may occur. External visible parts with primarily decorative requirements for the surface and which are in direct contact with the ambient atmosphere typical for industrial applications.

| Materials | | |
|------------------------|----------------|----------------------------|
| Pneumatic connection 1 | Male thread M5 | Male thread G1/8/G1/4/G3/8 |
| Housing | Steel | Aluminium |
| | Die-cast zinc | |
| Note on materials | RoHS-compliant | |

| Dimensions | | | | | | | | | | |
|----------------------------|-----------------|------|-------|-----|-------|------|------|------|------|---|
| Pneumatic connection | | D2 | H1 | H2 | H3 | H4 | L1 | L2 | L3 |  |
| External thread | For tubing O.D. | | | | | | | | | |
| D1 | [mm] | | | | | | | | | |
| M thread with sealing ring | | | | | | | | | | |
| M5 | 3 | 2.95 | 26.9 | 3.8 | 21.1 | 14.9 | 12.2 | 9.6 | 6 | 7 |
| | 4 | 3.6 | 28.7 | 3.8 | 22.3 | 12.6 | 18.7 | 14.7 | 9.7 | 7 |
| | 6 | 4.8 | 30.2 | 3.8 | 22.9 | 12.6 | 20.7 | 16.7 | 11.7 | 7 |
| G thread with sealing ring | | | | | | | | | | |
| G1/8 | 4 | 3.6 | 31.8 | 4.9 | 24.3 | 16.2 | 24 | 17.5 | 9.7 | 13 |
| | 6 | 4.8 | 33.15 | 4.9 | 24.75 | 16.2 | 26 | 19.5 | 11.7 | 13 |
| | 8 | 7 | 35.05 | 4.9 | 25.75 | 16.2 | 28.5 | 22 | 14.2 | 13 |
| G1/4 | 6 | 4.8 | 35.65 | 5.8 | 26.35 | 17.8 | 26 | 19.5 | 11.7 | 17 |
| | 8 | 7 | 37.55 | 5.8 | 27.35 | 17.8 | 28.5 | 22 | 14.2 | 17 |
| G3/8 | 8 | 7 | 38.55 | 6.8 | 27.35 | 17.8 | 28.5 | 22 | 14.2 | 19 |

Barbed fittings N/CN

Technical data

FESTO

| Ordering data | | | | | | |
|----------------------------|-----------------|---------------|------------------|----------|---------------|------------------|
| Pneumatic connection | | Nominal width | Weight/ piece | Part No. | Type | PU ¹⁾ |
| External thread | For tubing O.D. | | | | | |
| D1 | [mm] | [mm] | [g] | | | |
| M thread with sealing ring | | | | | | |
| M5 | 3 | 1.3 | 8 | 35982 | LCNH-M5-PK-2 | 10 |
| | 4 | 2.0 | 9 | 35983 | LCNH-M5-PK-3 | 10 |
| | 6 | 2.9 | 10 | 35984 | LCNH-M5-PK-4 | 10 |
| | | | | | | |
| G thread with sealing ring | | | | | | |
| G1/8 | 4 | 2.0 | 13 | 35985 | LCNH-1/8-PK-3 | 10 |
| | 6 | 2.9 | 14 | 35986 | LCNH-1/8-PK-4 | 10 |
| | 8 | 4.9 | 16 | 35987 | LCNH-1/8-PK-6 | 10 |
| G1/4 | 6 | 2.9 | 21 | 35988 | LCNH-1/4-PK-4 | 10 |
| | 8 | 4.9 | 22 | 35989 | LCNH-1/4-PK-6 | 10 |
| G3/8 | 8 | 4.9 | 29 | 35990 | LCNH-3/8-PK-6 | 10 |

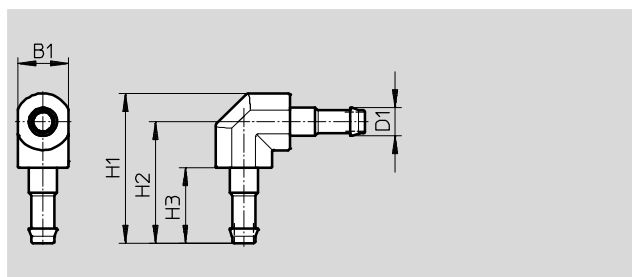
1) Packaging unit

Barbed fittings N/CN

Technical data

FESTO

Barbed L-connector L-PK



| Operating and environmental conditions | |
|--|--|
| Operating medium | Compressed air to ISO 8573-1:2010 [7:-:-] |
| Note on operating/pilot medium | Lubricated operation possible (in which case lubricated operation will always be required) |

| Materials | |
|-------------------|----------------|
| Housing | Brass, POM |
| Note on materials | RoHS-compliant |

| Dimensions and ordering data | | | | | | | | | | |
|------------------------------|--------------------|------|------|-------|------|------|-------------------|---------------|---------------|------------------|
| Pneumatic connection | Nominal width [mm] | B1 | D1 | H1 | H2 | H3 | Weight/ piece [g] | Part No. | Type | PU ¹⁾ |
| PK-2 | 1.5 | 4 | 2.95 | 12.2 | 10.2 | 6 | 1 | 19539 | L-PK-2 | 10 |
| PK-3 | 2.5 | 6.5 | 3.6 | 19.25 | 15.6 | 9.7 | 1 | 7473 | L-PK-3 | 10 |
| PK-4 | 3.4 | 7.8 | 4.8 | 23.1 | 18.7 | 11.7 | 2 | 9584 | L-PK-4 | 10 |
| PK-6 | 5.3 | 10.4 | 7 | 31.5 | 26.3 | 14 | 7 | 150012 | L-PK-6 | 10 |

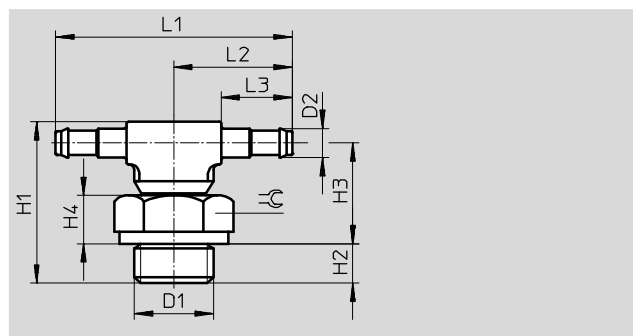
1) Packaging unit

Barbed fittings N/CN

Technical data

FESTO

Barbed T-fitting, TCN
with external thread
Rotatable 360°



| General technical data | |
|--|--|
| Type of seal on threaded plug | Sealing ring |
| Operating and environmental conditions | |
| Operating pressure [bar] | -0.95 ... +10 |
| Operating medium | Compressed air to ISO 8573-1:2010 [7:-:-] |
| Note on operating/pilot medium | Lubricated operation possible (in which case lubricated operation will always be required) |
| Ambient temperature [°C] | 0 ... +60 |
| Corrosion resistance class CRC ¹⁾ | 2 |

- 1) Corrosion resistance class CRC 2 to Festo standard FN 940070
Moderate corrosion stress. Indoor applications in which condensation may occur. External visible parts with primarily decorative requirements for the surface and which are in direct contact with the ambient atmosphere typical for industrial applications.

| Materials | | | |
|------------------------|------------------|----------------|----------------------------|
| Pneumatic connection 1 | Male thread M3 | Male thread M5 | Male thread G1/8/G1/4/G3/8 |
| Housing | High-alloy steel | Steel | Aluminium |
| | Die-cast zinc | | |
| Note on materials | RoHS-compliant | | |

| Dimensions and ordering data | | | | | | | | | | | | | | |
|------------------------------|----------------------|--------------------|------|-------|-----|-------|-----|------|------|------|-----|----------|--------------|------------------|
| Pneumatic connection | | Nominal width [mm] | D2 | H1 | H2 | H3 | H4 | L1 | L2 | L3 | ≙ | Part No. | Type | PU ¹⁾ |
| External thread | For tubing O.D. [mm] | | | | | | | | | | | | | |
| D1 | | | | | | | | | | | | | | |
| M thread with sealing ring | | | | | | | | | | | | | | |
| M3 | 3 | 1.3 | 2.95 | 14 | 2.8 | 9.2 | 3.0 | 19.2 | 9.6 | 6 | 4.5 | 30492 | TCN-M3-PK-2 | 10 |
| | 4 | 2.0 | 3.6 | 15.2 | 2.8 | 9.8 | 3.0 | 26.6 | 13.3 | 9.7 | 4.5 | 30983 | TCN-M3-PK-3 | 10 |
| M5 | 3 | 1.3 | 2.95 | 16 | 3.8 | 10.2 | 4.0 | 19.2 | 9.6 | 6 | 7 | 19525 | TCN-M5-PK-2 | 10 |
| | 4 | 2.0 | 3.6 | 20.1 | 3.8 | 13.7 | 4.0 | 29.4 | 14.7 | 9.7 | 7 | 12259 | TCN-M5-PK-3 | 10 |
| | 6 | 2.9 | 4.8 | 18.1 | 3.8 | 14.3 | 4.0 | 33.4 | 16.7 | 11.7 | 7 | 12432 | TCN-M5-PK-4 | 10 |
| G thread with sealing ring | | | | | | | | | | | | | | |
| G1/8 | 4 | 2.0 | 3.6 | 21.2 | 4.9 | 13.7 | 5.6 | 35 | 17.5 | 9.7 | 13 | 11961 | TCN-1/8-PK-3 | 10 |
| | 6 | 2.9 | 4.8 | 22.55 | 4.9 | 14.15 | 5.6 | 39 | 19.5 | 11.7 | 13 | 11962 | TCN-1/8-PK-4 | 10 |
| | 8 | 4.9 | 7 | 24.45 | 4.9 | 15.15 | 5.6 | 44 | 22 | 14.2 | 13 | 11963 | TCN-1/8-PK-6 | 10 |
| G1/4 | 6 | 2.9 | 4.8 | 25.05 | 5.8 | 15.75 | 7.2 | 39 | 19.5 | 11.7 | 17 | 11964 | TCN-1/4-PK-4 | 10 |
| | 8 | 4.9 | 7 | 26.95 | 5.8 | 16.75 | 7.2 | 44 | 22 | 14.2 | 17 | 11965 | TCN-1/4-PK-6 | 10 |
| G3/8 | 8 | 4.9 | 7 | 27.95 | 6.8 | 16.75 | 7.2 | 44 | 22 | 14.2 | 19 | 11966 | TCN-3/8-PK-6 | 10 |

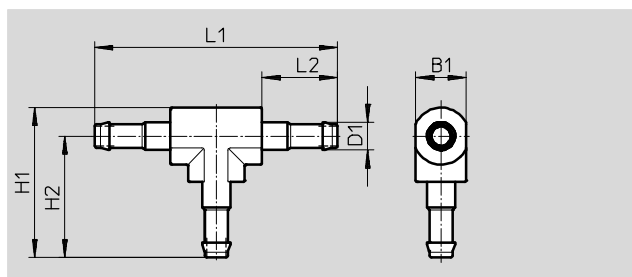
- 1) Packaging unit

Barbed fittings N/CN

Technical data

FESTO

Barbed T-connector T-PK



| Operating and environmental conditions | |
|--|--|
| Operating medium | Compressed air to ISO 8573-1:2010 [7:-:-] |
| Note on operating/pilot medium | Lubricated operation possible (in which case lubricated operation will always be required) |

| Materials | |
|-------------------|----------------|
| Housing | Brass, POM |
| Note on materials | RoHS-compliant |

| Dimensions and ordering data | | | | | | | | | | | |
|------------------------------|--------------------|------|------|-------|------|------|------|-------------------|---------------|---------------|------------------|
| Pneumatic connection | Nominal width [mm] | B1 | D1 | H1 | H2 | L1 | L2 | Weight/ piece [g] | Part No. | Type | PU ¹⁾ |
| PK-2 | 1.5 | 4 | 2.95 | 12.2 | 10.2 | 20.4 | 6 | 1 | 30919 | T-PK-2 | 10 |
| PK-3 | 2.5 | 6.5 | 3.6 | 19.25 | 15.6 | 31.2 | 9.7 | 2 | 7267 | T-PK-3 | 10 |
| PK-4 | 3.4 | 7.8 | 4.8 | 23 | 18.7 | 37.4 | 11.7 | 3 | 9585 | T-PK-4 | 10 |
| PK-6 | 5.3 | 10.4 | 7 | 31.5 | 26.3 | 52.6 | 14 | 11 | 150015 | T-PK-6 | 10 |

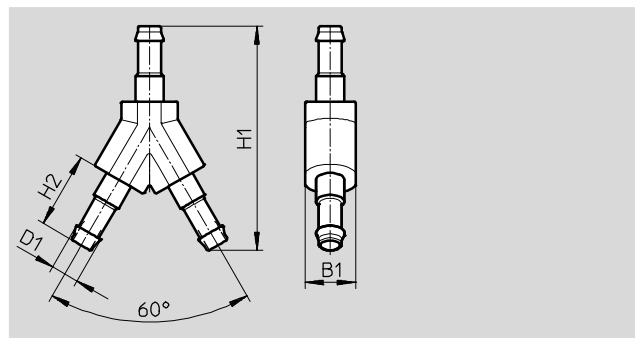
1) Packaging unit

Barbed fittings N/CN

Technical data

FESTO

Barbed Y-connector Y-PK



| Operating and environmental conditions | | | | | | | | | | |
|--|--|--|------|------|------|------|-------------------------|----------|--------|------------------|
| Operating medium | | Compressed air to ISO 8573-1:2010 [7:-:-] | | | | | | | | |
| Note on operating/pilot medium | | Lubricated operation possible (in which case lubricated operation will always be required) | | | | | | | | |
| Materials | | | | | | | | | | |
| Housing | | Brass, POM | | | | | | | | |
| Note on materials | | RoHS-compliant | | | | | | | | |
| Dimensions and ordering data | | | | | | | | | | |
| Pneumatic connection | | Nominal width [mm] | B1 | D1 | H1 | H2 | Weight/ piece [g] | Part No. | Type | PU ¹⁾ |
| PK-2 | | 1.5 | 4 | 2.95 | 18 | 6 | 1 | 19540 | Y-PK-2 | 10 |
| PK-3 | | 2.5 | 6.5 | 3.6 | 28.8 | 9.7 | 2 | 7269 | Y-PK-3 | 10 |
| PK-4 | | 3.4 | 7.8 | 4.8 | 34.5 | 11.7 | 3 | 9586 | Y-PK-4 | 10 |
| PK-6 | | 5.3 | 10.4 | 7 | 49.2 | 14 | 12 | 150013 | Y-PK-6 | 10 |

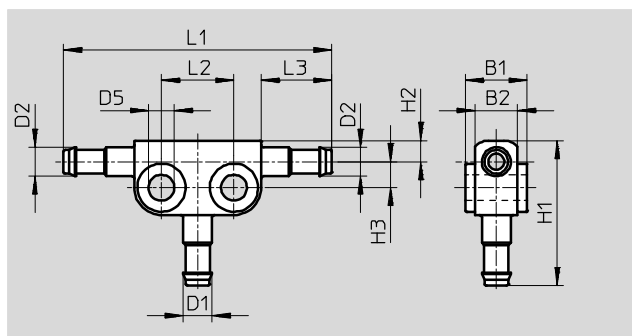
1) Packaging unit

Barbed fittings N/CN

Technical data

FESTO

Barbed T-connector FCN



| Operating and environmental conditions | |
|--|--|
| Operating pressure [bar] | -0.95 ... +10 |
| Operating medium | Compressed air to ISO 8573-1:2010 [7:-:-] |
| Note on operating/pilot medium | Lubricated operation possible (in which case lubricated operation will always be required) |
| Ambient temperature [°C] | 0 ... +60 |
| Corrosion resistance class CRC ¹⁾ | 2 |

1) Corrosion resistance class CRC 2 to Festo standard FN 940070

Moderate corrosion stress. Indoor applications in which condensation may occur. External visible parts with primarily decorative requirements for the surface and which are in direct contact with the ambient atmosphere typical for industrial applications.

| Materials | |
|-------------------|----------------|
| Housing | Die-cast zinc |
| Note on materials | RoHS-compliant |

| Dimensions | | | | | | | | | | | | |
|--------------------------------------|--------|------|-----|------|------|-----|------|-----|-----|------|----|------|
| Pneumatic connection for tubing O.D. | | B1 | B2 | D1 | D2 | D5 | H1 | H2 | H3 | L1 | L2 | L3 |
| 1 [mm] | 2 [mm] | | | | | | | | | | | |
| 3 | 3 | 6 | 4 | 2.95 | 2.95 | 3.2 | 15.7 | 3.1 | 2.6 | 28 | 8 | 6 |
| | 4 | 8.4 | 5.2 | 2.95 | 3.6 | 4.3 | 17.9 | 3.5 | 3.9 | 38.4 | 10 | 9.7 |
| 4 | 4 | 8.4 | 5.2 | 3.6 | 3.6 | 4.3 | 21.6 | 3.5 | 3.9 | 38.4 | 10 | 9.7 |
| | 6 | 10.2 | 7 | 3.6 | 4.8 | 4.3 | 22 | 3.5 | 4.3 | 44.4 | 12 | 11.7 |
| 6 | 6 | 10.2 | 7 | 4.8 | 4.8 | 4.3 | 24 | 3.5 | 4.3 | 44.4 | 12 | 11.7 |
| | 8 | 12 | 8.8 | 4.8 | 7 | 4.3 | 25.9 | 4.4 | 5.3 | 49.4 | 12 | 14.2 |
| 8 | 8 | 12 | 8.8 | 7 | 7 | 4.3 | 28.4 | 4.4 | 5.3 | 49.4 | 12 | 14.2 |

| Ordering data | | | | | | |
|--------------------------------------|--------|---------------|---------------|----------|--------------|------------------|
| Pneumatic connection for tubing O.D. | | Nominal width | Weight/ piece | Part No. | Type | PU ¹⁾ |
| 1 [mm] | 2 [mm] | [mm] | [g] | | | |
| 3 | 3 | 1.3 | 5 | 19527 | FCN-3-PK-2-B | 10 |
| | 4 | 1.3 | 8 | 31314 | FCN-3-PK-3/2 | 10 |
| 4 | 4 | 2 | 8 | 14768 | FCN-3-PK-3 | 10 |
| | 6 | 2 | 12 | 31315 | FCN-3-PK-4/3 | 10 |
| 6 | 6 | 2.9 | 12 | 14769 | FCN-3-PK-4 | 10 |
| | 8 | 2.9 | 16 | 31316 | FCN-3-PK-6/4 | 10 |
| 8 | 8 | 4.9 | 16 | 14770 | FCN-3-PK-6 | 10 |

1) Packaging unit

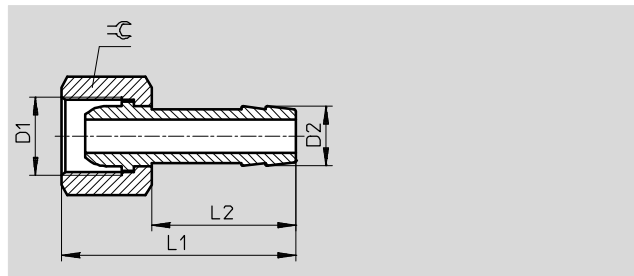
Barbed hose fittings C-P/N-P, for hose clip

Technical data

FESTO

Barbed hose fitting C-...-P

Plastic tubing is inserted and then secured with a hose clip SK.



Operating and environmental conditions

| | |
|--------------------------------|--|
| Operating medium | Compressed air to ISO 8573-1:2010 [7:-:-] |
| Note on operating/pilot medium | Lubricated operation possible (in which case lubricated operation will always be required) |

Materials

| | |
|---------|-------|
| Housing | Brass |
|---------|-------|

Dimensions and ordering data

| Pneumatic connection | | Nominal width | D2 | L1 | L2 | ≡ | Weight/ piece | Part No. | Type | PU ¹⁾ |
|----------------------|-------|---------------|------|----|----|----|------------------|-------------|-------------------|------------------|
| D1 | | [mm] | | | | | [g] | | | |
| G thread | | | | | | | | | | |
| G1/8 | PK-6 | 4 | 7 | 36 | 24 | 13 | 18 | 2021 | C-1/8-P-6 | 10 |
| G1/4 | PK-6 | 4.5 | 7 | 39 | 24 | 17 | 28 | 2022 | C-1/4-P-6 | 10 |
| | PK-9 | 5.5 | 10 | 39 | 24 | 17 | 34 | 2023 | C-1/4-P-9 | 10 |
| G3/8 | PK-6 | 4.5 | 7 | 39 | 24 | 19 | 31 | 2024 | C-3/8-P-6 | 1 |
| | PK-9 | 6.5 | 10 | 39 | 24 | 19 | 34 | 2025 | C-3/8-P-9 | 1 |
| G1/2 | PK-13 | 11 | 14.8 | 50 | 30 | 24 | 64 | 2026 | C-1/2-P-13 | 1 |

1) Packaging unit

Barbed hose fittings C-P/N-P, for hose clip

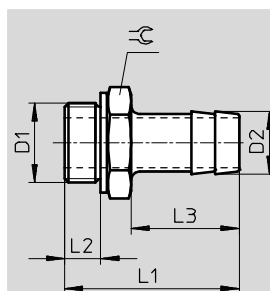
Technical data

FESTO

Barbed hose fitting N-...-P

Aluminium design

Plastic tubing is inserted and then secured with a hose clip SK.



| General technical data | |
|---|--|
| Type of seal on threaded plug | Sealing ring OK (G thread only) |
| Operating and environmental conditions | |
| Operating pressure for entire temperature range [bar] | -0.95 ... +16 |
| Operating medium | Compressed air to ISO 8573-1:2010 [7:-:-] |
| Note on operating/pilot medium | Lubricated operation possible (in which case lubricated operation will always be required) |
| Corrosion resistance class CRC ¹⁾ | 2 |

1) Corrosion resistance class CRC 2 to Festo standard FN 940070

Moderate corrosion stress. Indoor applications in which condensation may occur. External visible parts with primarily decorative requirements for the surface and which are in direct contact with the ambient atmosphere typical for industrial applications.

| Materials | |
|-------------------|-------------------------|
| Housing | Blue anodised aluminium |
| Note on materials | RoHS-compliant |

| Dimensions and ordering data | | | | | | | | | | |
|------------------------------|-------|---------------|------|-------|------|------|-------|----------|----------------|------------------|
| Pneumatic connection | | Nominal width | D2 | L1 | L2 | L3 | ≅ | Part No. | Type | PU ¹⁾ |
| D1 | | [mm] | | | | | | | | |
| G thread with sealing ring | | | | | | | | | | |
| G1/8 | PK-6 | 4.5 | 7 | 34.7 | 4.9 | 24.2 | 13 | 3605 | N-1/8-P-6 | 10 |
| G1/4 | PK-6 | 4.5 | 7 | 37.1 | 5.8 | 24.1 | 17 | 3606 | N-1/4-P-6 | 10 |
| | PK-9 | 6.5 | 10 | 37.1 | 5.8 | 24.1 | 17 | 3607 | N-1/4-P-9 | 10 |
| G3/8 | PK-6 | 4.5 | 7 | 38.1 | 6.8 | 24.1 | 19 | 3608 | N-3/8-P-6 | 10 |
| | PK-9 | 7.6 | 10 | 38.1 | 6.8 | 24.1 | 19 | 3609 | N-3/8-P-9 | 10 |
| | PK-13 | 11 | 14.8 | 45.4 | 6.8 | 30 | 19 | 36160 | N-3/8-P-13 | 1 |
| G1/2 | PK-9 | 8 | 10.3 | 39.5 | 8.15 | 24 | 24 | 3610 | N-1/2-P-9 | 1 |
| | PK-13 | 11 | 14.8 | 45.5 | 8.15 | 30 | 24 | 3611 | N-1/2-P-13 | 1 |
| G3/4 | PK-13 | 11 | 14.8 | 50 | 9.05 | 30 | 32 | 3612 | N-3/4-P-13 | 1 |
| | PK-19 | 16.5 | 20.8 | 56 | 9.05 | 36 | 32 | 3613 | N-3/4-P-19 | 1 |
| R thread | | | | | | | | | | |
| R1 | PK-19 | 16.5 | 20.8 | 68.6 | – | 36 | 34 | 572260 | N-1-P-19 | 1 |
| NPT thread | | | | | | | | | | |
| NPT3/4-14 | PK-19 | 16.5 | 20.8 | 66.68 | – | 36 | 30.17 | 564848 | N-3/4-P-19-NPT | 1 |
| NPT1-11 1/2 | PK-19 | 16.5 | 20.8 | 74.0 | – | 36 | 34 | 572243 | N-1-P-19-NPT | 1 |

1) Packaging unit

Barbed hose fittings C-P/N-P, for hose clip

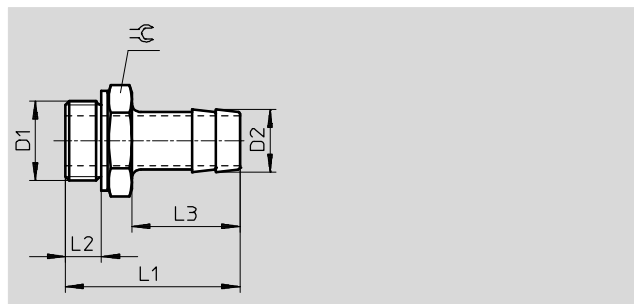
FESTO

Technical data

Barbed hose fitting N-...-P-...-MS

Brass design

Plastic tubing is inserted and then secured with a hose clip SK.



General technical data

| | |
|-------------------------------|-----------------|
| Type of seal on threaded plug | Sealing ring OK |
|-------------------------------|-----------------|

Operating and environmental conditions

| | |
|---|--|
| Operating pressure for entire temperature range [bar] | -0.95 ... +16 |
| Operating medium | Compressed air to ISO 8573-1:2010 [7:-:-] |
| Note on operating/pilot medium | Lubricated operation possible (in which case lubricated operation will always be required) |
| Corrosion resistance class CRC ¹⁾ | 1 |

1) Corrosion resistance class CRC 1 to Festo standard FN 940070

Low corrosion stress. For dry indoor applications or transport and storage protection. Also applies to parts behind covers, in the non-visible interior area, and parts which are covered in the application (e.g. drive trunnions).

Materials

| | |
|-------------------|----------------|
| Housing | Brass |
| Note on materials | RoHS-compliant |

Dimensions and ordering data

| Pneumatic connection | | Nominal width | D2 | L1 | L2 | L3 | ≅ | Part No. | Type | PU ¹⁾ |
|----------------------------|-------|---------------|------|------|------|------|----|----------|---------------|------------------|
| D1 | | [mm] | | | | | | | | |
| G thread with sealing ring | | | | | | | | | | |
| G1/8 | PK-6 | 4.5 | 7 | 34.7 | 4.9 | 24.2 | 13 | 15630 | N-1/8-P-6-MS | 10 |
| G1/4 | PK-6 | 4.5 | 7 | 37.1 | 5.8 | 24.1 | 17 | 15631 | N-1/4-P-6-MS | 10 |
| | PK-9 | 6.5 | 10 | 37.1 | 5.8 | 24.1 | 17 | 15632 | N-1/4-P-9-MS | 10 |
| G3/8 | PK-6 | 4.5 | 7 | 38.1 | 6.8 | 24.1 | 19 | 15633 | N-3/8-P-6-MS | 10 |
| | PK-9 | 7.6 | 10 | 38.1 | 6.8 | 24.1 | 19 | 15634 | N-3/8-P-9-MS | 10 |
| | PK-13 | 11 | 14.8 | 45.4 | 6.8 | 30 | 19 | 36161 | N-3/8-P-13-MS | 1 |
| G1/2 | PK-9 | 8 | 10.3 | 39.5 | 8.15 | 24 | 24 | 15635 | N-1/2-P-9-MS | 1 |
| | PK-13 | 11 | 14.8 | 45.5 | 8.15 | 30 | 24 | 15636 | N-1/2-P-13-MS | 1 |
| G3/4 | PK-13 | 11 | 14.8 | 50 | 9.05 | 30 | 32 | 15637 | N-3/4-P-13-MS | 1 |
| | PK-19 | 16.5 | 20.8 | 56 | 9.05 | 36 | 32 | 15638 | N-3/4-P-19-MS | 1 |

1) Packaging unit

Hose clip SK

Technical data

FESTO

Hose clip SK

to DIN 3017

The hose clips are equipped with a worm thread. 9 mm band width.



| Materials | | | | |
|-----------|-------|--|--|--|
| Housing | Steel | | | |

| Ordering data | | | | |
|------------------|------------------|----------|----------|------------------|
| Clamping range Ø | Weight/ piece | Part No. | Type | PU ¹⁾ |
| [mm] | [g] | | | |
| 8 ... 16 | 7 | 9274 | SK-8-16 | 10 |
| 16 ... 27 | 12 | 9275 | SK-16-27 | 10 |
| 20 ... 32 | 13 | 9276 | SK-20-32 | 10 |

1) Packaging unit